

Injury attendances to Royal Bolton Hospital Emergency Department

October 2011 to September 2012

This report summarises recorded injury attendances to Royal Bolton Emergency Department (ED) between October 2011 and September 2012.

Between October 2011 and September 2012 there were 41,903 injury attendances to Royal Bolton ED. Males accounted for over half (52%) of these attendances. The month with the highest attendances was May (n=3,772) with June having the lowest (n=3,059) (**Figure 1**). Of the specified injury groups falls (9%) accounted for the highest proportion followed by road traffic collision (RTC) (4%), sports injury (3%) and assault (3%) (**Table 1**).

The highest proportion of attendances was for persons aged 20 to 34 (25%) and 35 to 49 (19%) years (**Figure 2**). Over a half (53%) of fall attendees were aged 65 or over while nearly three in ten (28%) of burns and scalds injuries were sustained by 0 to 4 year olds. Nearly four in ten (38%) of RTC attendees were aged 20-34 (**Figure 3**).

Table 2 shows the ethnicity of attendees to Royal Bolton ED. Seven in ten (70%) were white.

The disposal of a patient can give an indication of the severity of the injuries sustained. Four in ten (40%) of attendees were referred, almost four in ten (38%) were discharged and 15% were admitted (**Table 3**). Over half (51%) of burns and scalds attendees were referred, while over a quarter (27%) of deliberate

self-harm (DSH) attendees were admitted. Over two-fifths (43%) of assault attendees were discharged. Almost a quarter (24%) of fall attendees were admitted (**Table 4**).

Table 5 shows the arrival methods of attendances at Royal Bolton ED. Almost three-quarters (74%) of attendees arrived on foot, whilst a quarter (25%) arrived by ambulance.

Table 6 shows the location of the incident of the main injury groups (excluding other injury). Over half (56%) injuries occurred in the home. Four-fifths (80%) of burns and scalds occurred in the home. One in five (20%) of sports injuries occurred in an educational establishment.

Table 7 presents data for assault attendees to Royal Bolton ED. Males represent over seven in ten (71%) of assault attendances, whilst almost half (47%) of assault attendees were aged 20 to 34. Almost half (46%) of assault attendees arrived by ambulance.

Figure 1: Royal Bolton ED: Total injury attendances by gender and month, October 2011 to September 2012

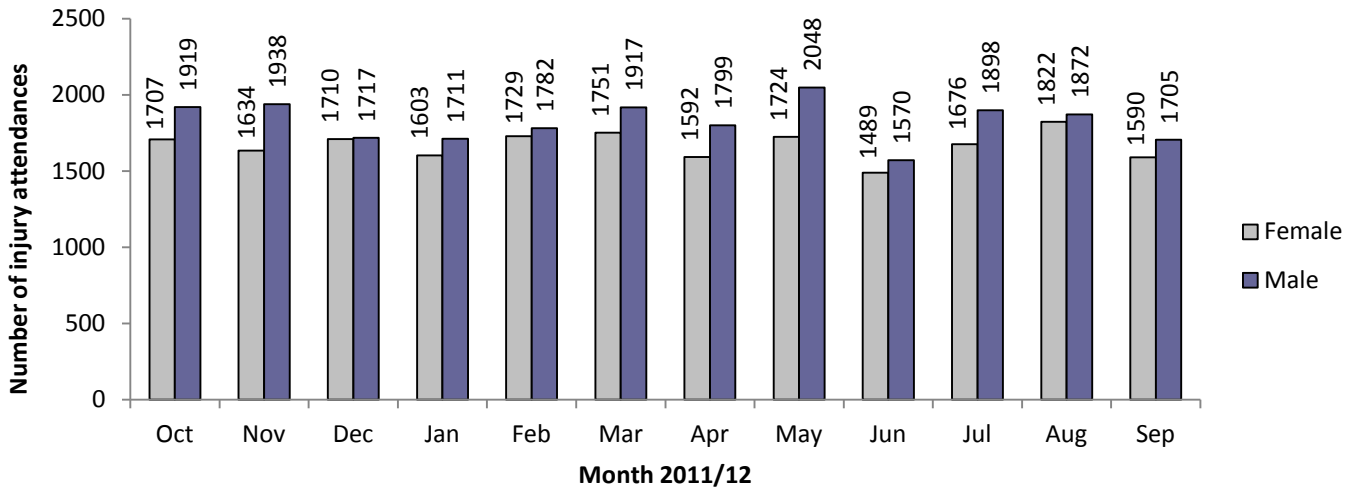
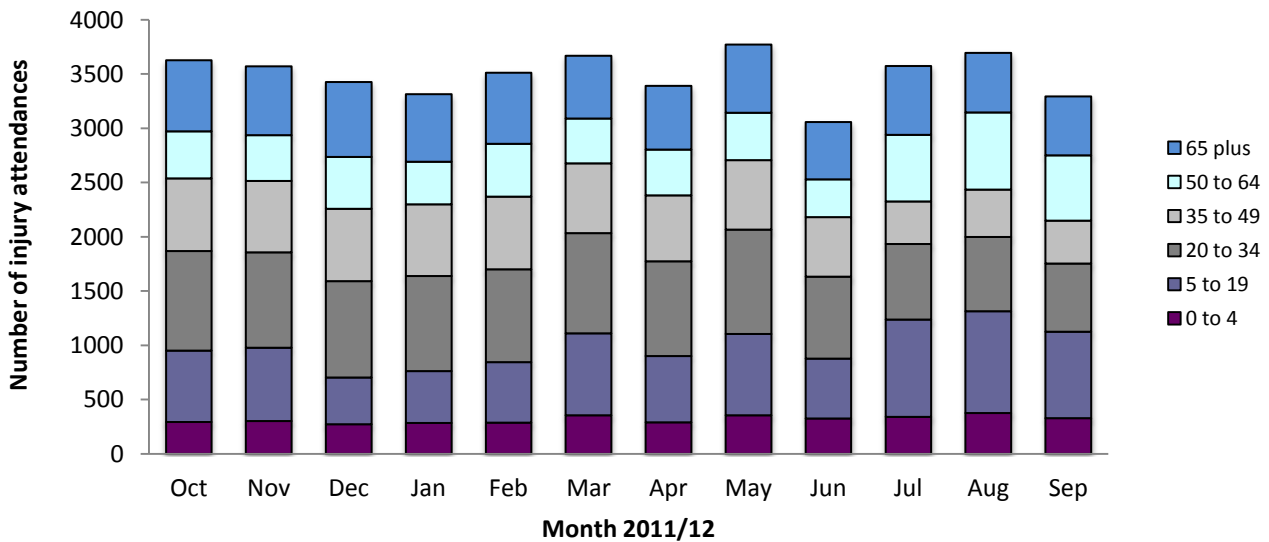


Table 1: Royal Bolton ED: Total injury attendances by injury group and month, October 2011 to September 2012¹

Injury group	Oct	Nov	Dec	Jan	Feb	Mar	Apr	May	Jun	Jul	Aug	Sep	Total	%
Other injury	2671	2766	2619	2476	2702	2702	2578	2764	2221	2657	2768	2447	31371	75
Fall	315	226	329	273	323	301	296	361	337	344	298	322	3725	9
RTC	172	124	149	156	125	159	153	183	136	116	147	151	1771	4
Sports injury	156	162	47	108	114	174	105	154	78	110	79	89	1376	3
Assault	139	132	129	133	100	149	94	120	116	119	118	111	1460	3
Bites and stings	70	44	41	43	49	59	70	82	89	133	151	82	913	2
Burns and scalds	70	84	73	81	70	64	61	70	52	52	95	55	827	2
DSH	33	34	40	44	28	60	34	38	30	43	38	38	460	1
Total	3626	3572	3427	3314	3511	3668	3391	3772	3059	3574	3694	3295	41903	100

Figure 2: Royal Bolton ED: Total injury attendances by age group and month, October 2011 to September 2012



¹ Firework injury has been included in other injury due to low numbers (n<5)

Figure 3: Royal Bolton ED: Total injury attendances by age group and injury group (excluding other injury), October 2011 to September 2012

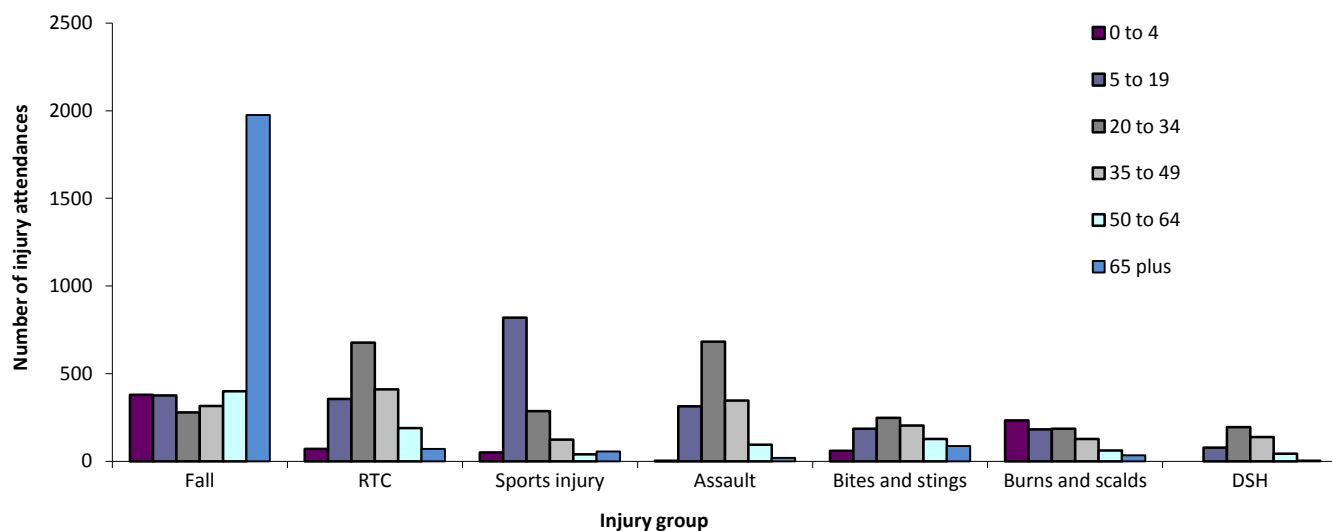


Table 2: Royal Bolton ED: Total injury attendances by ethnicity and month, October 2011 to September 2012²

Ethnic group	Oct	Nov	Dec	Jan	Feb	Mar	Apr	May	Jun	Jul	Aug	Sep	Total	%
White	2600	2543	2425	2378	2496	2567	2402	2630	2095	2512	2561	2287	29496	70
Not stated	422	444	386	355	419	460	356	457	402	415	444	395	4955	12
Not known	309	303	299	304	301	350	332	375	299	355	386	344	3957	9
Pakistani	93	93	113	89	90	110	109	102	89	111	95	110	1204	3
Indian	111	91	96	94	94	89	98	115	82	107	97	82	1156	3
Mixed	30	25	22	30	37	25	32	29	27	23	40	25	345	1
Black	26	23	29	29	22	26	19	24	19	19	30	16	282	1
Any other ethnic group	17	20	28	18	26	20	22	25	24	16	15	20	251	1
Any other Asian background	10	21	22	12	18	15	14	8	17	11	20	11	179	0
Chinese	***	<8	***	***	***	***	***	***	***	***	***	***	45	0
Bangladeshi	***	***	***	***	***	***	***	***	***	***	***	***	33	0
Total	3626	3572	3427	3314	3511	3668	3391	3772	3059	3574	3694	3295	41903	100

Table 3: Royal Bolton ED: Total injury attendances by method of disposal and month, October 2011 to September 2012*

Disposal	Oct	Nov	Dec	Jan	Feb	Mar	Apr	May	Jun	Jul	Aug	Sep	Total	%
Referred/follow-up	1570	1530	1415	1304	1386	1419	1235	1441	1149	1438	1543	1367	16797	40
Discharged	1309	1245	1172	1200	1294	1432	1365	1528	1197	1407	1493	1350	15992	38
Admitted	498	546	609	594	586	570	530	562	466	526	491	467	6445	15
Other	249	251	231	216	245	247	261	241	247	203	167	111	2669	6
Total	3626	3572	3427	3314	3511	3668	3391	3772	3059	3574	3694	3295	41903	100

*Percentages may not add up to 100 due to rounding

Table 4: Royal Bolton ED: Total injury attendances by method of disposal and injury group (excluding other injury), October 2011 to September 2012*

Disposal	Assault		Bites and stings		Burns and scalds		DSH		Fall		RTC		Sports injury		Total	
	n	%	n	%	n	%	n	%	n	%	n	%	n	%	n	%
Referred/follow-up	572	39	376	41	419	51	170	37	1451	39	726	41	605	44	4319	41
Discharged	635	43	477	52	353	43	97	21	1284	34	895	51	659	48	4400	42
Admitted	64	4	20	2	18	2	124	27	881	24	70	4	79	6	1256	12
Other	190	13	40	4	37	4	69	15	109	3	80	5	33	2	558	5
Total	1461	100	913	100	827	100	460	100	3725	100	1771	100	1376	100	10533	100

*Percentages may not add up to 100 due to rounding

Table 5: Royal Bolton ED: Total injury attendances by arrival mode and month, October 2011 to September 2012*

Arrival mode	Oct	Nov	Dec	Jan	Feb	Mar	Apr	May	Jun	Jul	Aug	Sep	Total	%
Foot	2701	2658	2445	2381	2591	2725	2528	2807	2297	2667	2835	2516	31151	74
Ambulance	918	899	976	925	915	932	857	957	754	897	852	775	10657	25
Other	7	15	6	8	5	11	6	8	8	10	7	***	95	0
Total	3626	3572	3427	3314	3511	3668	3391	3772	3059	3574	3694	3295	41903	100

*Percentages may not add up to 100 due to rounding

² Please note that all numbers less than five have been suppressed in line with patient confidentiality and if there is only one number <5 in a category then two numbers will be suppressed at the next level.

Table 6: Royal Bolton ED: Total injury attendances by location and injury group (excluding other injury), October 2011 to September 2012*

Incident location	Assault		Bites and stings		Burns and scalds		DSH		Fall		RTC		Sports injury		Total	
	n	%	n	%	n	%	n	%	n	%	n	%	n	%	n	%
Home	677	46	570	62	664	80	372	81	2610	70	552	31	488	35	5933	56
Other	393	27	274	30	124	15	59	13	844	23	592	33	217	16	2503	24
Public place	341	23	47	5	10	1	26	6	166	4	617	35	209	15	1416	13
Educational establishment	14	1	7	1	***	0	***	1	65	2	5	0	269	20	363	3
Work	31	2	13	1	26	3	0	0	25	1	***	0	***	0	<100	1
Leisure facility	***	0	***	0	***	0	0	0	<15	0	***	0	191	14	215	2
Not specified	***	0	***	0	***	0	***	0	***	0	***	0	***	0	***	0
Total	1461	100	913	100	827	100	460	100	3725	100	1771	100	1376	100	10533	100

*Percentages may not add up to 100 due to rounding.

Table 7: Royal Bolton ED: Total assault attendances by gender, arrival mode, location of incident and age group of attendance, October 2011 to September 2012*

	Assault attendees		All injury attendees (n=41,903)	
	n	%	n	%
Gender				
Male	1042	71		52
Female	418	29		48
Arrival mode				
Ambulance	676	46		25
Foot	772	53		74
Other	12	1		0
Location				
Not specified	***	0		0
Home	677	46		56
Public place	341	23		13
Other	395	27		24
Work	31	2		1
Educational establishment	<15	1		3
Age group				
0 - 4	***	0		9
5 - 19	314	22		18
20 - 34	683	47		25
35 - 49	346	24		19
50 - 64	94	6		12
65 plus	<21	1		17

*Percentages may not add up to 100 due to rounding.

Author: Johnathan Rooney, Published: December 2012

For further information please contact: Val Upton, Centre for Public Health, Research Directorate, Liverpool John Moores University, 2nd Floor, Henry Cotton Building, 15-21 Webster Street, Liverpool, L3 2ET, Tel: 0151 231 4539 or Email: j.rooney@ljmu.ac.uk

Website: www.tiig.info (data requests should be made through the website)